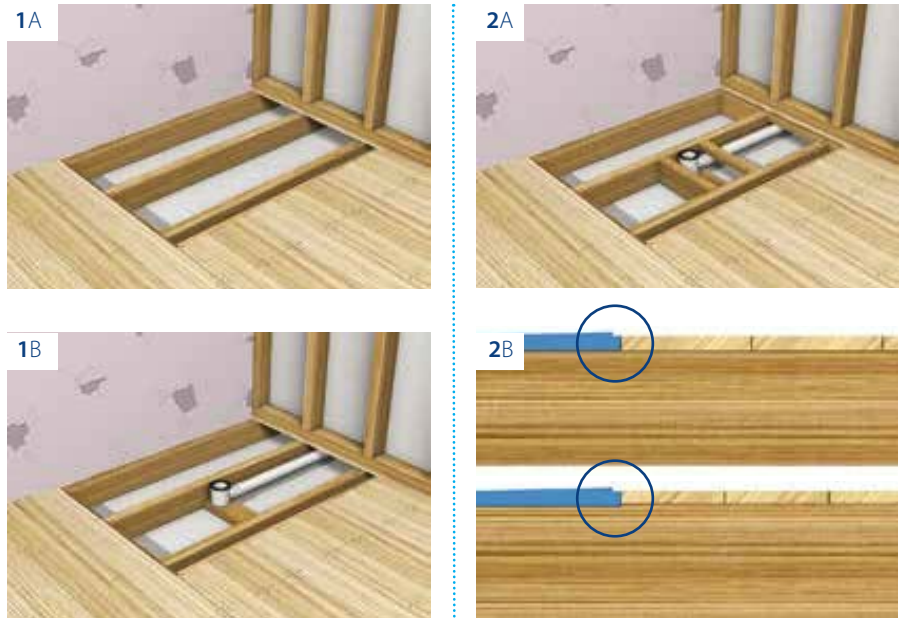


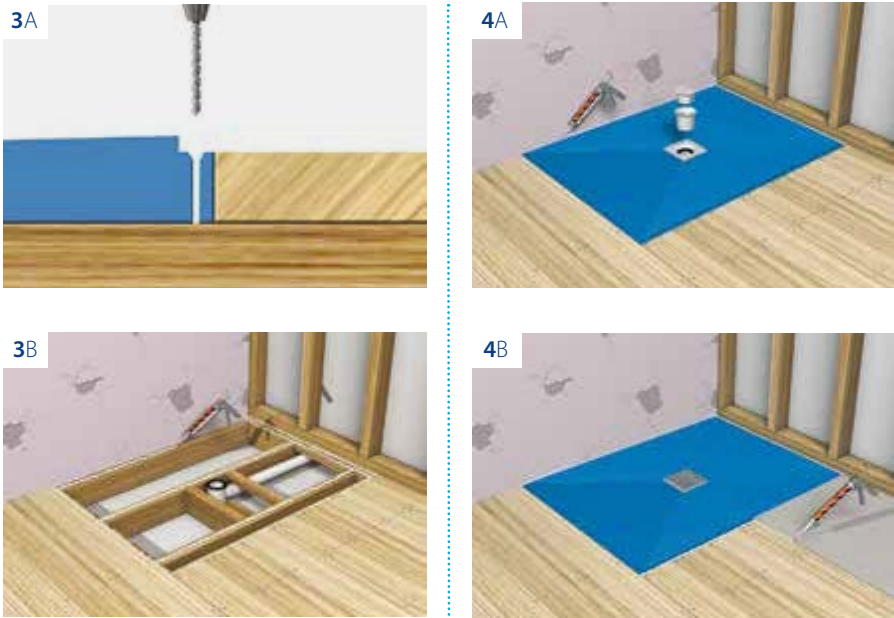
## Kaskade on timber floors



**Step 1**  
Cut out floor boards to the size of the shower tray. Put the trap and waste into position and support with timber to the correct height. The black rubber seal of the trap should be 22mm below existing floor level.

**Step 2**  
Fix extra timbers where required to support edges of the shower tray and closely around the outlet. Use Mega Strength adhesive to ensure a firm fix. The tray is designed to sit 6mm proud of a 22mm floorboard. If installing the tray into an 18mm floorboard, the joists will need to be routed by 4mm.

For your lifetime guarantee, always use Megalastic wetroom adhesive to fix tiles onto your Kaskade shower tray. It's been specially formulated for this use.



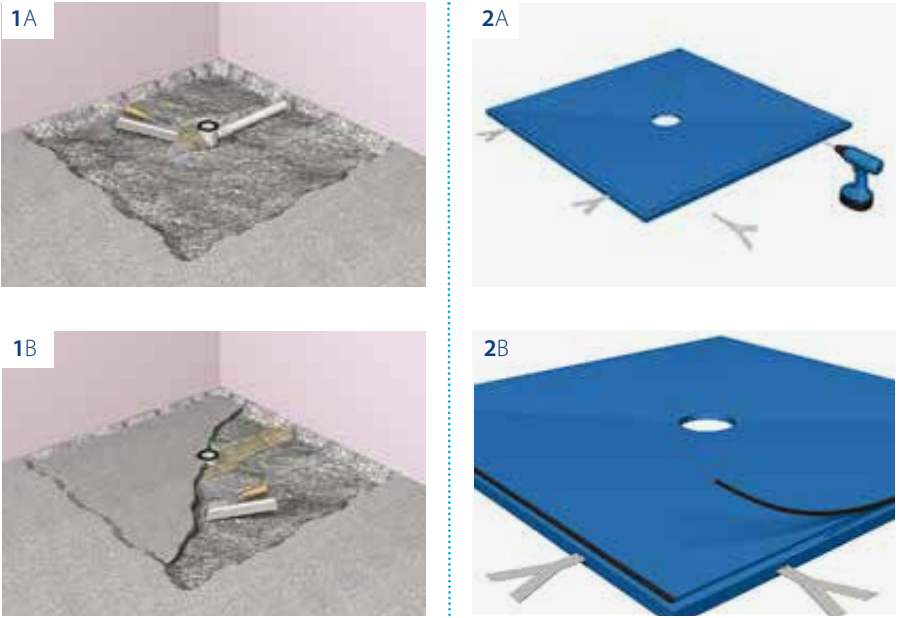
**Step 3**  
Drill 4mm pilot holes down through the rebated section of the tray. Run a bead of Mega Strength adhesive along the joists and noggins, then stick the tray into position. Finish by screwing down the tray, filling screw holes with Mega Strength adhesive for a watertight seal. DO NOT OVER TIGHTEN.

**Step 4**  
Use the temporary plastic cover to protect the trap during tiling. You can now overboard the floor using 6mm NoMorePly, sealing all joints with Mega Strength adhesive. Remember to waterproof the walls of your shower area.

**STS**  
For advice on installation  
call: 0800 0094 354 or visit: [sts-uk.com/wetrooms](https://sts-uk.com/wetrooms)  
Lines open: Monday-Friday 7am-5pm

**Pro Tip**  
You will need to order a tray, a trap and an installation kit to complete the job.

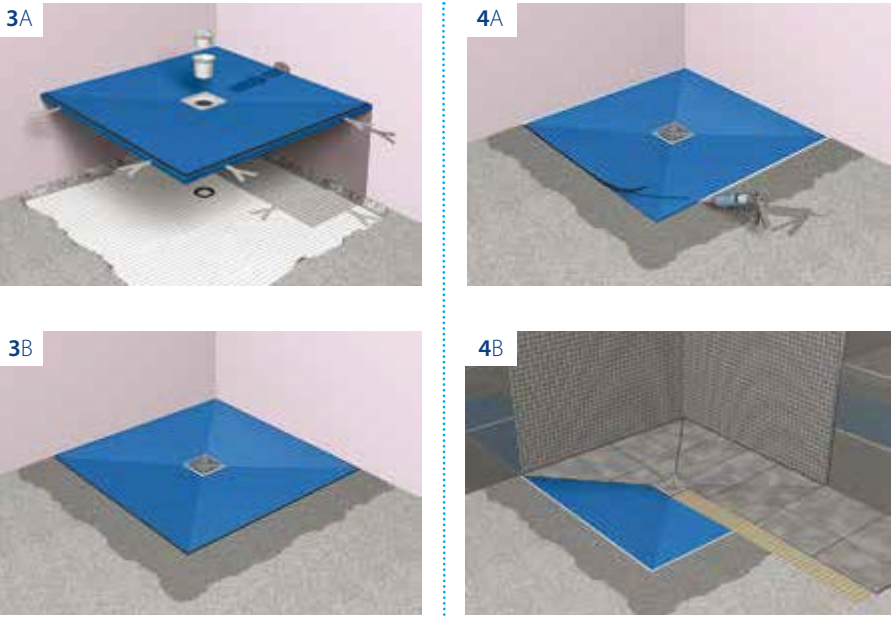
## Kaskade or NoMorePly System on concrete floors



**Step 1**  
Cut out concrete floor to the size of the tray, plus an extra 100mm in both directions. Depth of cut should be 40mm. Black rubber seal of trap should be 28mm below existing floor level. Fill round trap and waste with weak sand and cement mix. Lay a level bed of fast setting concrete, ensuring that it is 32mm below the existing floor level.

**Step 2**  
Drill two 4mm holes into the outside edges of the tray and carefully screw in the four stainless steel anchors. Stick the temporary 6mm rubber strip into the rebate of the room-facing edges of the tray.

When installing a tray into a concrete floor, please order a Concrete Fixing Kit. This includes: 4 stainless steel anchors, a rubber strip, a tube of Mega Power Sealant, MEGA Tanking Kit and a tub of MEGALASTIC.



**Step 3**  
Prime concrete, then stick the tray down using a 4mm bed of flexible tile adhesive, ensuring that the top is flush with the existing floor level and that a 3mm gap is left between tray and the walls. Assemble and install the trap. Fill void around the tray with screed.

**Step 4**  
When screed is set, remove 6mm rubber strip and fill gap with Mega Power Sealant, plus gaps between the tray and walls. Always use Megalastic adhesive when tiling onto a Kaskade tray.

**STS**  
For advice on installation  
call: 0800 0094 354 or visit: [sts-uk.com/wetrooms](https://sts-uk.com/wetrooms)  
Lines open: Monday-Friday 7am-5pm

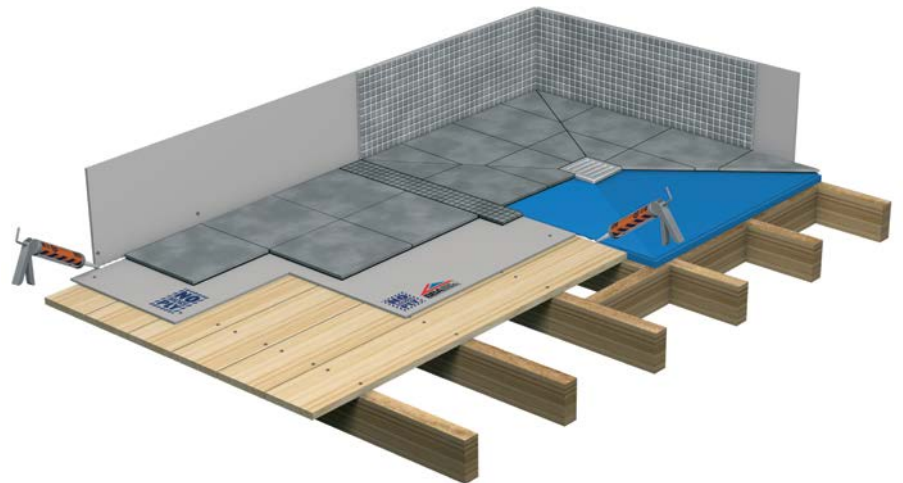
**Pro Tip**  
You will need to order a tray, a trap and an installation kit to complete the job.

## STS - Guarantee and guidance

**Lifetime Guarantee**  
The NoMorePly and Kaskade lifetime guarantee only applies when the correct installation procedures, as set out in our Installation Guide, have been followed and the recommended NoMorePly system essentials are used during installation.



**For guidance only**  
As conditions of use and any labour involved are beyond our control, the end user must satisfy himself by prior testing that the product is suitable for his specific application. No responsibility can be accepted or any warranty given by our representatives, agents or distributors.



**STS**  
For advice on installation  
call: 0800 0094 354 or visit: [sts-uk.com/wetrooms](https://sts-uk.com/wetrooms)  
Lines open: Monday-Friday 7am-5pm

STS / Building Better

[sts-uk.com/wetrooms](https://sts-uk.com/wetrooms)

## Wetroom Specification & Installation Guide



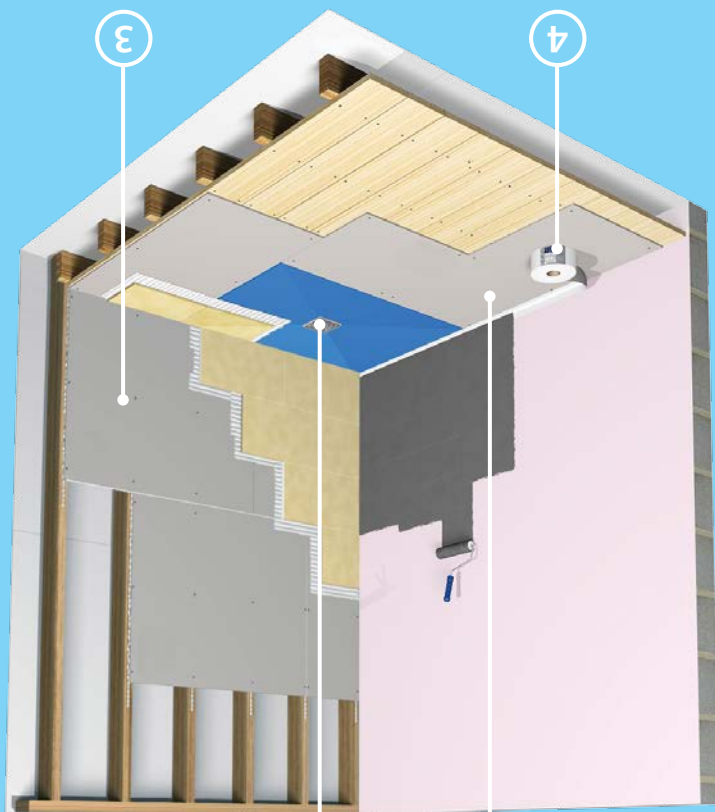
**STS**

**1 Trays and Traps**  
Trays and traps in a variety of sizes and designs to fit timber and solid surfaces, that can be finished in tiles, mosaics and vinyls.

**2 6mm Fibre Cement Board**  
6mm NoMorePly boards strengthen timber floors before tiling and fit perfectly with both unique one-coat tanking membrane, MEGA Tanking Kits include BLUETANK™

**3 12mm STS Construction Board**  
12mm boards provide strong partition walls that can carry the largest and heaviest tiles, plus tricky bathroom wall fixings.

**4 MEGA Tanking Kits**  
6mm NoMorePly and Kaskade wetroom systems. ready to tile in under 2 hours.



The complete wetroom solution

A great idea, made easy.  
Wetroom Systems from STS.

Create a sense of space, add the wow factor and increase the value of your home with a wetroom. You can enjoy a luxurious shower experience even in the smallest area and our step-free design makes them accessible to everyone.

Choose from either a NoMorePly or Kaskade system. The NoMorePly system is ideal for bathrooms and ensuite, fitting onto timber or into solid surfaces and finishing with tiles. Kaskade is a heavy duty tray that requires no under-boarding and is the perfect choice for use with vinyl, tiles or mosaics. Both systems can be specified with fixing essentials and tanking kits.

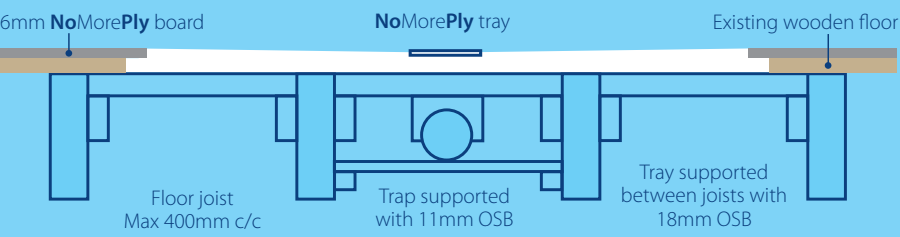


V1 STS Wetrooms 04/17



# NoMorePly System

## Fitting your trap, waste and tray



- Step 1**  
After sweeping clean, mark the position for your tray, then cut free the floor boards to the size of the tray and remove. The shower tray will sit directly onto the floor joists.
- Step 2**  
Position the trap and connect to the external drain. Fix 2x1" PSE wooden battens to each side of the joists using Mega Strength adhesive and screws. Battens will carry 18mm OSB boards which supports the tray when in position.
- Step 3**  
Ensure the trap is supported to stand flush with the top of the joists and is directly beneath the preformed grate opening.
- Step 4**  
Always ensure the tray is fully supported (Refer to line drawing far left). Use Mega Strength adhesive to stick the tray into position. Secure the edges of the tray using screws and the 8 rectangular washers provided.

**PRO TIP** - Always do a dry run before the final fix.

**Note.** When fitting a NoMorePly linear tray, a square edge tile trim of the same thickness as the tiles should be used around the outlet of the trap to protect the edge of the tiles and provide a neat finish.

# NoMorePly System

Choose **NoMorePly** when fitting into timber or concrete floors and laying tiles or mosaics. Ideal for ensembles and bathrooms.

## 1. Select your trap



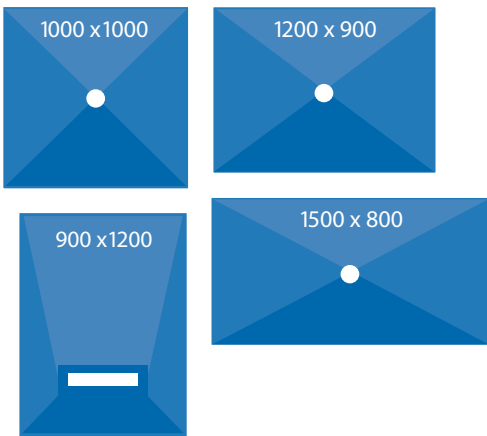
## 2. Select your tray size

NoMorePly for Tiles			
Stock Code	Size	Style	
5940	1000 x 1000mm	Standard	
5941	1200 x 900mm	Standard	
5942	1500 x 800mm	Standard	
5943	1200 x 900mm	Linear	

Kaskade for Tiles			
Stock Code	Size	Style	
5840	1000 x 1000mm	Standard	
5841	1200 x 900mm	Standard	
5842	1500 x 800mm	Standard	
102249	1200 x 900mm	Linear	

Kaskade for Vinyl			
Stock Code	Size	Style	
5837	1000 x 1000mm	Standard	
5838	1200 x 900mm	Standard	
5839	1500 x 800mm	Standard	

## Examples



# Kaskade System

Choose Kaskade when you need a heavy duty tray that requires no under-boarding or when finishing with tiles or vinyl. Ideal for ensembles, bathrooms and commercial applications.

## 1. Select your trap



## 3. Fixing Kits

NoMorePly for Timber / using Tiles							
Wetroom Sizes (Total Floor Area)	3m²	4m²	5m²	6m²	8m²	10m²	12m²
6mm x 600 x 1200 NoMorePly	3	5	6	8	10	13	16
Mega Strength Adhesive	2	3	3	3	3	3	3
NoMorePly Tiler's Primer 500ml	1	1	1	1	1	1	1
NoMorePly Screws (50 x 28mm)	1	1	1	1	1	1	1
NoMorePly Scoring Knife	1	1	1	1	1	1	1
MEGA Tanking Kit	1	1	1	1	1	1	1
Order Code	5323	5324	5325	5326	5328	5330	5332

Kaskade for Timber / using Tiles							
Wetroom Sizes (Total Floor Area)	3m²	4m²	5m²	6m²	8m²	10m²	12m²
6mm x 600 x 1200 NoMorePly	3	5	6	8	10	13	16
Mega Strength Adhesive	2	3	3	3	3	3	3
NoMorePly Tiler's Primer 500ml	1	1	1	1	1	1	1
NoMorePly Screws (50 x 28mm)	1	1	1	1	1	1	1
NoMorePly Scoring Knife	1	1	1	1	1	1	1
MEGA Tanking Kit	1	1	1	1	1	1	1
Megalastic	1	1	1	1	1	1	1
Order Code	5423	5424	5425	5426	5428	5430	5432

Kaskade for Timber / using Vinyl							
Wetroom Sizes (Total Floor Area)	3m²	4m²	5m²	6m²	8m²	10m²	12m²
6mm x 600 x 1200 NoMorePly	3	5	6	8	10	13	16
Mega Strength Adhesive	2	3	3	3	3	3	3
NoMorePly Screws (50 x 28mm)	1	1	1	1	1	1	1
NoMorePly Scoring Knife	1	1	1	1	1	1	1
MEGA Tanking Kit	1	1	1	1	1	1	1
Order Code	5443	5444	5445	5446	5448	5450	5452

NoMorePly & Kaskade for Concrete (Tiles or Vinyl)		
Wetroom Sizes (Total Floor Area)	All	
Concrete Fixing Kit	1	
Order Code	5808	



## NoMorePly System Essentials



**NOTE - For Linear Trays**  
A standard L shaped trim to the thickness of the tile, will finish off and protect the tile edges around the trap on linear trays. **41002 (10mm trim)**

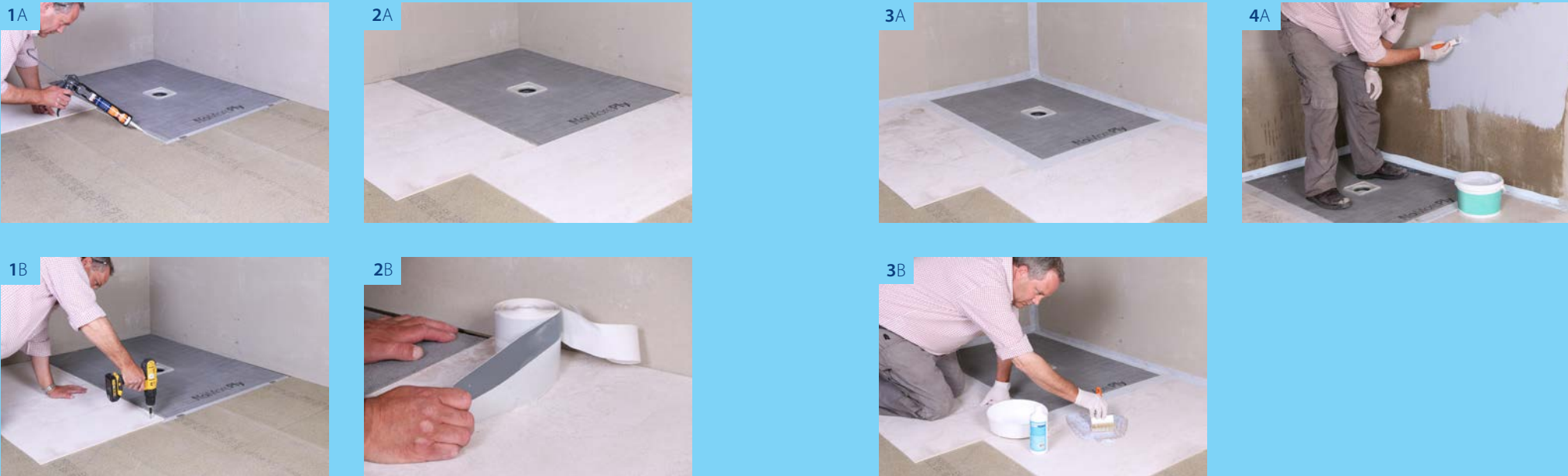


**MEGA Tanking Kit.** Includes BLUE TANK™ unique ONE-COAT tanking membrane, enough to cover 8m². Fast drying, ready to tile in under 2 hours. **5588**

**MEGALASTIC.** Remember to use MEGALASTIC adhesive when fixing tiles on Kaskade trays to ensure you are covered by Lifetime Guarantee. **5621**

# NoMorePly System

## Tanking your wetroom



- Step 1**  
Over-board timber floors using NoMorePly to create a strong, waterproof foundation. Slim 6mm boards fit directly into the tray's rebate. Secure using Mega Strength adhesive and screws.
- Step 2**  
Once over-boarding is complete, work the jointing tape around the tray and into the corners of the room. Mega tape is self adhesive and has a split backing for easy application.
- Step 3**  
Once taping is complete, apply two coats of NoMorePly tiler's primer to the boards to improve tile adhesion and ensure a waterproof finish.
- Step 4**  
Apply BLUETANK™ unique one-coat tanking membrane. There's enough in each tub to cover 8m². Fast drying and ready to tile in under 2 hours.

**PRO TIP** - Super flexible Mega Tape can easily be formed in corners and around pipework without the need for extra corner pieces.